

November 2021

Newsletter



L'école Mondiale
Inspiring Excellence • Building Character

INSIDE THIS EDITION

- Meet Us
- Leaders in Me
- Early School Program
- Primary School Program
- Information about Hifz program
- A space for IGCSE students
- Defence day
- Gallery Walk
- Important dates



MEET US!



I am Ms. Saima Umair. I am interested in cooking and love to help everyone. If you need any help, meet me!!

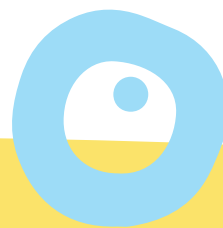
Saima Umair
Facilities Manager



This is Gaytee Bhatti. I am fashion trendy and an excellent communicator. My positivity is my strength. Drawing and sketching are my interests. Meet me and be my fan!

Gaiti Bhatti
Admissions Coordinator





Parents As Partners

As a Leader in Me School, one of our 5 Core Paradigms is that parents and teachers partner to support the whole child. What this means is that we value you as your student's first teacher. You know your student best. Oftentimes it's easy to assume that teachers are the only ones who are responsible for a student's academic and social success in school. As a parent of a Leader in Me student, we believe that you are a valuable member of our Learning Team. You have an important role in the educational journey of your student. Research shows that when parents are engaged in their student's education, the student's success, academically and behaviorally, increases significantly. If we know this partnership is critical, what can we do to create a partnership?

We would love to get your insights and feedback on what we can do to nurture this partnership as well as your ideas on what you would like to do as a partner in your student's education. Following are a few of our insights on working together to create a partnership:

Partnering is about communication and relationships. We want to honor your family's culture, beliefs, and circumstances. We want to communicate with you about what is happening in school, but that's only one part of effective communication. We encourage you to share your opinions, ideas, and background. We believe all of us have unique gifts and talents. If you are doing something at home that works well for your student, that you are proud of, or simply a fun fact about your family, share it with us. Your input and voice is so important! A partnership is not only about being physically present at the school, volunteering, or being on committees—that is only one aspect of partnership. If you're working full time, travel for work, or simply cannot be physically present to engage that doesn't mean you're not our partner.

There are other ways to engage such as:

- Add our school to your social media feed.
- Set up regular times to check in with your student about what they enjoy at school or what is a challenge.
- Regularly check emails or other communications from your student's teachers and respond. Ask questions when clarification is needed.
- Model a positive attitude about school.

Let's keep the communication lines open! We may have questions or concerns. Let's create space to ask questions and listen to each other. We want to be there for you! Just like you, we can't do this alone. We must come together as a Learning Team to support your student and ensure they have every opportunity for success.

We look forward to our partnership!

EARLY SCHOOL PROGRAM

A Day with My Toy

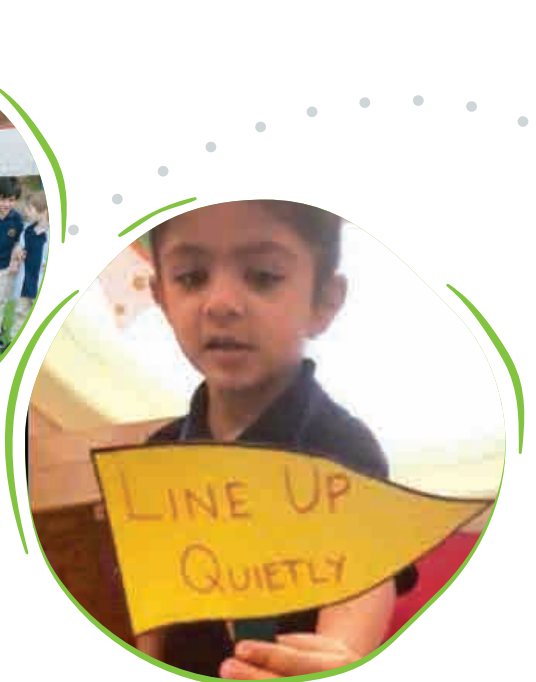
Early Years' learners brought in their favourite toy on Monday 4th October. The day was the opportunity for them to show their favourite toy to their friends and to extend their social circles with the idea of sharing.



Assembly Presentations about "WHO WE ARE"

A positive sense of identity is crucial to the development of self-esteem and confidence. In this theme, the early school will explore themselves, the significance of community helpers and the experiences that help them to stay connected.

Learning to read is about listening and understanding as well as working out what is printed on the page, in Early School. Through hearing stories, children are exposed to a wide range of words. This helps them build their own vocabulary and improve their understanding when they listen, which is vital as they start to read.



AS LEAVES TURN YELLOW!

It is a wonderful season for discovering and a great way to have young learners connect to their natural environment and explore the significant changes that help them to adapt changes in life.

While on a nature hunt they learnt about variety of leaves' colours, shape and size.



MESSY PLAY DAY!

Learning through play and exploring is a vital part of children' development.

We celebrated "Messy play" on Friday, 22nd October, a day that offered one of the best integrated learning experiences young children can have.

Children were delighted on building on the sensory experiences to produce symbols, language, social and other academic skills while pouring and scooping water, squishing mud, mixing colour, drawing imagination, dripping letter/number/words/shapes and sorting leaves.



PRIMARY SCHOOL PROGRAM

Movie Time



Movies are highly effective in extending education beyond classroom. Movie time in PSP2 assisted the learners in getting the feel of a real-world problem; cutting trees. The learners enjoyed the time and reflected beautifully about our daily practices and the ways of improving those to make this world a better place.

Celebrating the stories by dressing up as a character!

PSP1 thoroughly enjoyed the day and the learners shared their insights about different stories and the details of the characters followed up by drawing the imaginary story setting. What a wonderful day it was!



MASK MAKING IN PSP 4-5



Mask making, when the learners individualise their designs, is a project that is always enjoyed by children of all ages. The masks created in our recent workshop are examples of the sort of aesthetic only young learners can come up with!

Arts display of PSP3

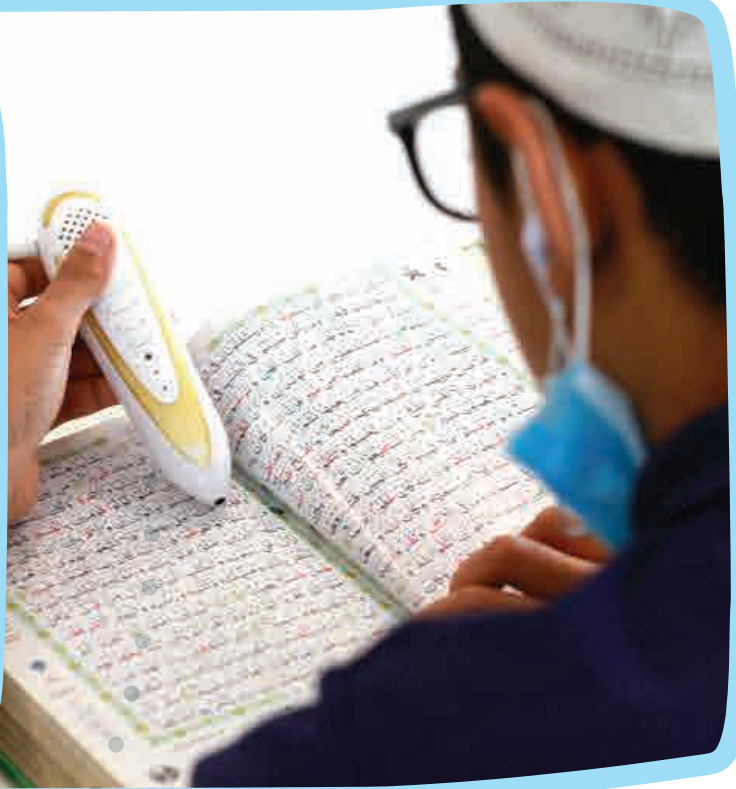


The “Gallery Walk” has given the learners an exposure to discuss and display their Art work around a room much like artists would display their artistic pieces in an “exhibit.” This special occasion gave the learners a sense of achievement towards their artistic expression.

HIFZ

Recite and rise in status, recite as you used to recite in the world, for your status will be at the last verse that you recite.” (Jami` at-thirmidhi 2914)

We congratulate Ibrahim Waqas, Abdul Sami and Mohiz Ismail for completing hifz in this month mashaAllah. May Allah (SWT) bless them and their parents for this accomplishment. Amen! We also pray that may Allah SWT help all of us to be practicing Muslims. Amen!



A SPACE FOR IGCSE STUDENTS

Her Remorse

Stealing away the ability to think
her forgiving choices began to sink
the fury caused her mind to shrink
and everybody around her started to stink

Dragging her luggage, out she went
It was restless the night she spent
Her first decision to this extent
Made her feel sorry and repent

A treasured lesson she learned that night
A precious one, that will set things right

~Hafsa Bukhari~

Time Runs

Man!!
Time runs?
Yea it Does!!
So, why don't you?
You have legs
you have strength
you have to be determined
Don't do something that later force you to
wish for getting your time back"

~Maryam Gohar~
IGCSE 1

Faith

Though everything may have ended,
It was all still there
Because I hadn't lost hope,
I had yet to live here
I'm not alive but I'm not dead either
I rely on my ambitions in order to move further,
For people's lives do not end when they die,
It ends when they lose faith

~Ashhal Imran~

DEFENCE DAY

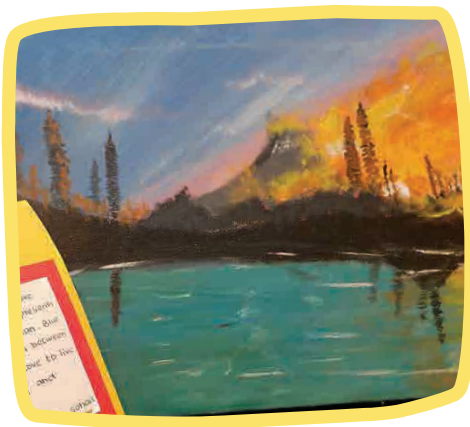
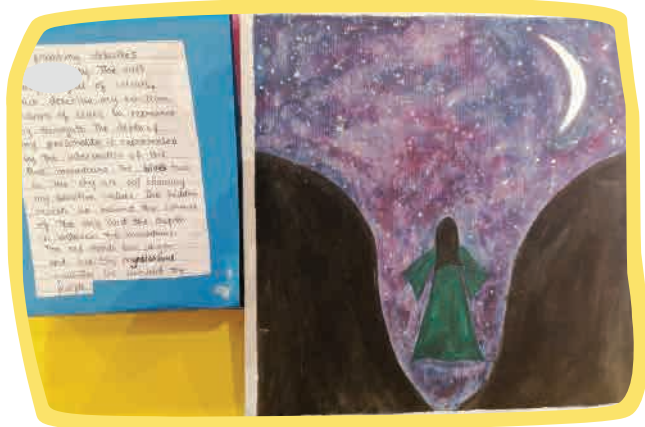


GALLERY WALK

Let's
express
ourselves in
an artistic
way!



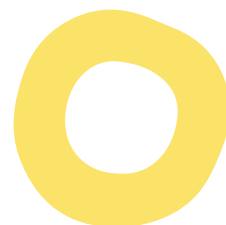
GALLERY WALK



CALENDAR

We are very happy to announce a parents' corner in the Newsletter this year. Please feel free to share your thoughts with us before 25th November to be included in the next edition through email at info@lecolemondiale.edu.pk

Priority would be given to the early submissions.
JazakAllah!



NOVEMBER - 2021

SUN	MON	TUE	WED	THU	FRI	SAT
	1	2	3	4	5	6
7	8	9	10	11	12 A display of my expression	13 IGCSE fun trip
14	15	16 A visit to explore "where we are in place and time"	17	18	19 Three way conference	20 IGCSE- Parent Teacher Conference
21	22 ESP -A picnic with my toy PSP -Buddies & books	23	24 World Unique Talent Day	25 Interschool competition; 'Kalam e Iqbal'	26	27
28	29	30 PSP-General knowledge quiz				